

## INDICE

### MANUAL L - Línea ACCESORIOS

3005 / 00 - Pág. 2  
 Escuadra



3013 / 64 - Pág. 2  
 Escuadra de Amurar



3030 / 66 - Pág. 2  
 Escuadra



3032 / 01 - Pág. 1



3032 / 02 - Pág. 1



3032 / 03 - Pág. 1



3032 / 04 - Pág. 1



3032 / 05 - Pág. 1



3032 / 06 - Pág. 1



3032 / 07 - Pág. 1



3032 / 08 - Pág. 1



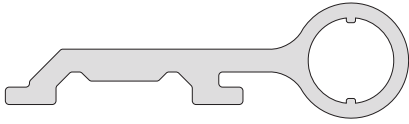
3032 / 09 - Pág. 1



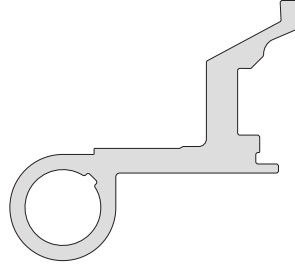
3032 / 67 - Pág. 2



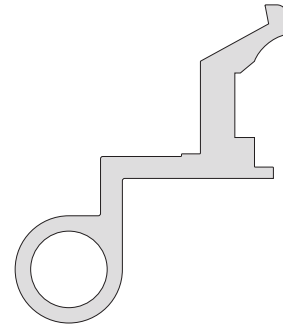
**BISAGRAS**



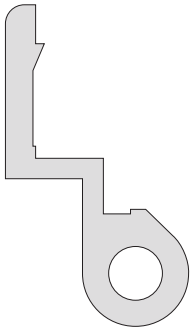
**3032/01**  
656 g/m



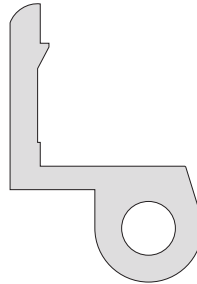
**3032/02**  
640 g/m



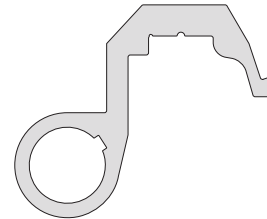
**3032/03**  
707 g/m



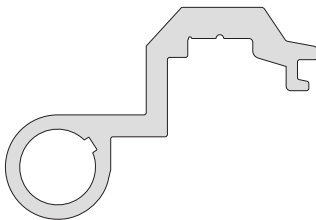
**3032/04**  
810 g/m



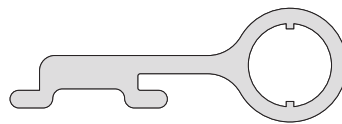
**3032/05**  
716 g/m



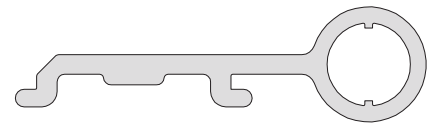
**3032/06**  
545 g/m



**3032/07**  
605 g/m

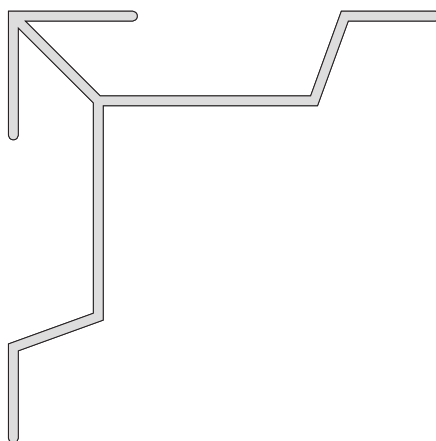


**3032/08**  
537 g/m

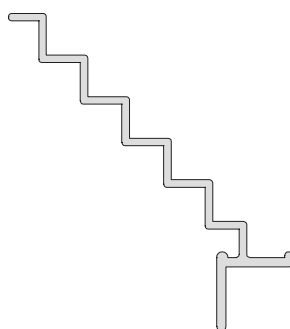


**3032/09**  
605 g/m

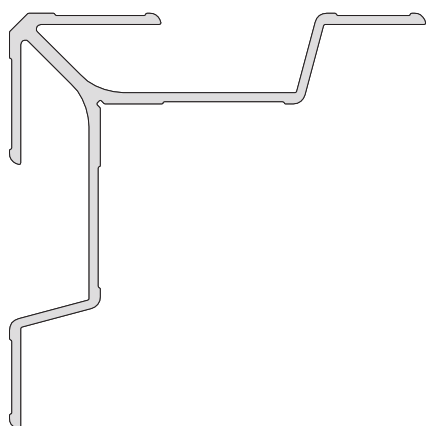
**ESCUADRAS**



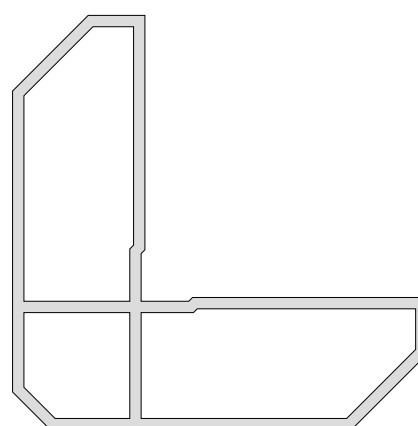
**3005/00**  
 Escuadra  
 535 g/m  
 10 barras de 6.050 mm.



**3013/64**  
 Escuadra de amurar  
 235 g/m  
 12 barras de 6.000 mm.



**3030/66**  
 Escuadra  
 548 g/m  
 10 barras de 6.150 mm.



**3032/67**  
 Escuadra E67  
 926 g/m  
 4 barras de 6.150 mm.